



**WEST CANADIAN  
DEVELOPMENT CORP.**

PRESENTS  
**THE PALISADES**  
OF  
HAMPTON VILLAGE



**32 LUXURY TOWNHOUSE UNITS**

[www.thepalisadesonline.com](http://www.thepalisadesonline.com)

[www.westcanadiandevelopment.com](http://www.westcanadiandevelopment.com)

# STANDARD FEATURES

1300 SqFt unit

## INTERIOR

- Engineered floor and roof trusses
- 3 bedrooms
- 2 1/2 baths
- 9 foot ceilings on main
- 40 oz nylon carpet with 7.5lb underlay
- Laminate flooring
- Maple cabinets (Superior Cabinets)
- Granite counter tops (Kitchen)
- Delta single leaver faucets
- High efficiency furnace
- Brushed silver lighting package



## EXTERIOR

- Single attached garage
- 8'x18' deck with aluminum rail (walk-out units only)
- Kay can siding, and shake
- Eldorado stone accents
- Pot lighting
- 9'x8' steel door and opener
- Aluminum eavestrough and trim
- 25 year IKO asphalt shingle

## OPTIONS

- 2 sided fireplace with ceramic tile finish and maple mantle
- 8 foot cabinets
- Granite banjo counter tops in full baths
- Central-Vac
- Under mount kitchen sink
- Central air conditioning
- Additional paint color

### Bonus Appliance Package

- Fridge, Stove, Dishwasher, Microwave/Hood fan, Washer, Dryer

## CONSTRUCTION

- Elegant 6/12 roof pitch
- 13' 4" x 21' single attached garage
- Rough in 3 piece plumbing in basement
- R-20 insulation
- 2x6 exterior wall framing 16" OC
- 1 piece acrylic tub
- VanEE air exchange system
- Energy Star windows

# CondoPro Condominium Warranty



Canada's Best Condominium Warranty Program!

CondoPro is designed specifically to protect new condominium buyers. The CondoPro symbol represents excellence and assures condominium buyers that their CondoPro Builder has met high standards of accountability in the areas of finance, construction, and customer satisfaction. Homeowners can feel confident and secure with the protection they get from CondoPro.

A Condo Warranty product that offers higher limits, longer terms and coverages not available from other warranty programs is a winning combination.

## **1 Year Materials and Labour Warranty**

All **CondoPro Builders** warrant against Latent Defects and Structural Defects (items that do not conform with warranty standards) in workmanship and materials that may occur during the **first year** after possession.

## **2 Years Mechanical Systems Warranty**

The CondoPro warranty extends into the second year of ownership to the crucial mechanical systems that keeps a home comfortable. CondoPro provides coverage for any Latent Defect in materials and labour supplied for the gas, electrical, plumbing, heating, ventilation, and air conditioning delivery systems. Another reason why CondoPro is Canada's Best Condominium Warranty!

## **5 Years Foundation Water Penetration Warranty**

The CondoPro Warranty provides coverage to repair foundation walls that allow water penetration and threaten the comfort and beauty of a new home. The 5 year coverage term is also exclusive to CondoPro, which is just one more reason why CondoPro is Canada's Best Condominium Warranty!

## **10 Years Structural Defects Warranty**

The CondoPro Warranty protects the very heart of a home's structure for 10 full years. CondoPro covers any defect in materials and labour that results in a failure of the load bearing portion of the building or the structural damage that might result from such a failure such that it renders the home unlivable or dangerous to occupy. No other warranty offers 10 years of coverage as a minimum standard, another reason why CondoPro is Canada's Best Condominium Warranty!

## **\$60,000 Structural Defect Coverage Per Condominium Unit**

The CondoPro Warranty provides up to \$60,000 per condominium unit to cover structural defects, up to a maximum of \$500,000 in any one building. This limit is another reason that CondoPro is Canada's Best Condominium Warranty!

## **\$6,000 Additional Living Expenses Coverage**

In addition, a CondoPro Warranty will ensure Homeowners will have a place to live if they have to move out of the condo because of a Structural Defect. Condo owners will be reimbursed up to \$6,000 for reasonable expenses incurred, such as hotel rooms and food costs, while they are unable to live in the home.

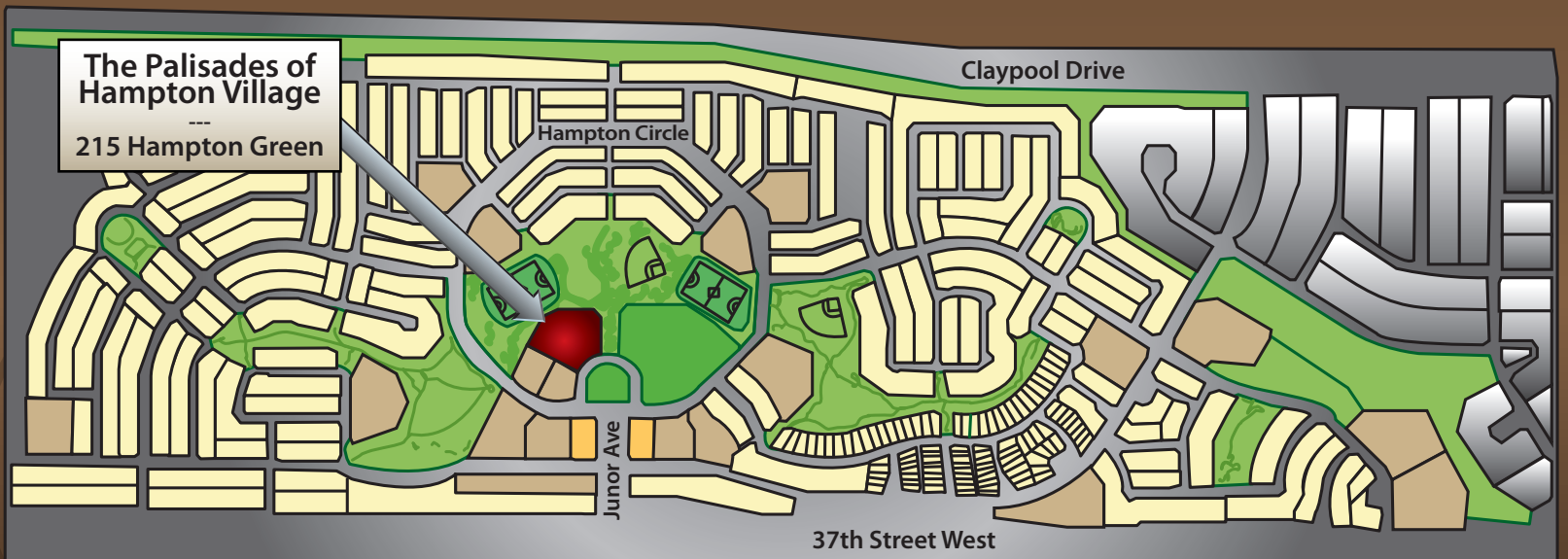
## **\$500,000 Common Property Limit**

The Common Property Limit of the CondoPro warranty is equal to \$60,000 times the number of units in the building to a maximum of \$500,000.

# SITEMAP



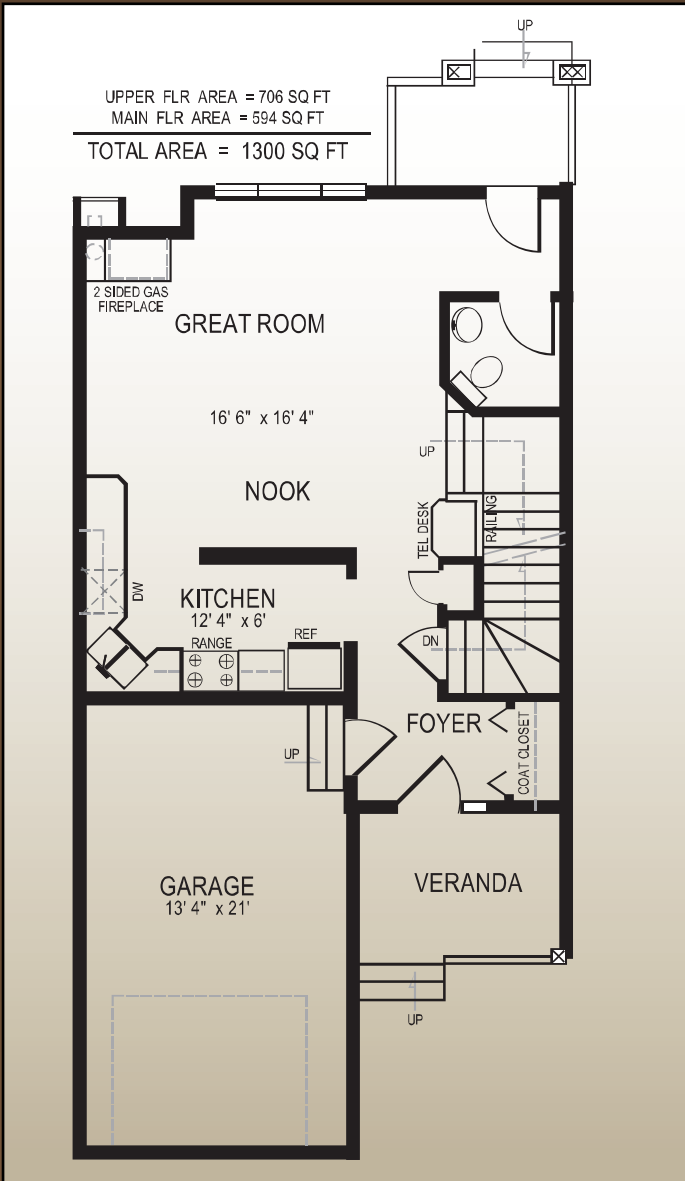
# LOCATION



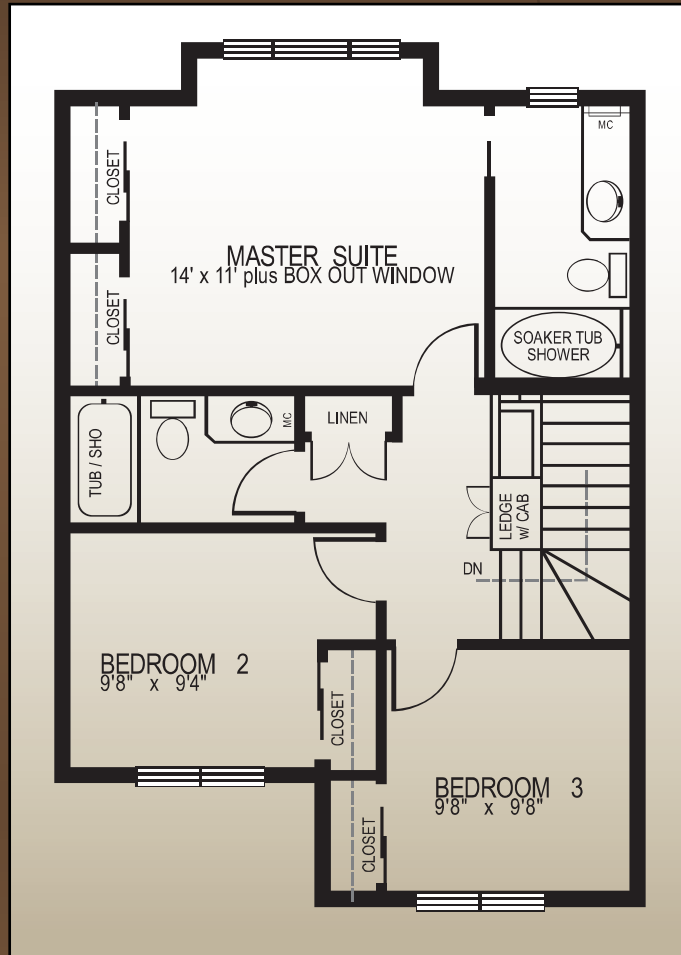
# FLOOR PLANS

MAIN FLOOR AREA = 594 SQ FT  
 UPPER FLOOR AREA = 706 SQ FT  
 TOTAL AREA = 1300 SQ FT

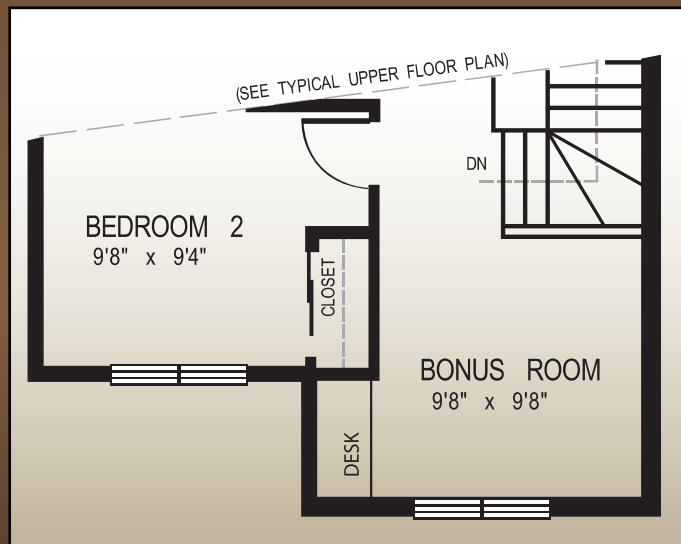
## MAIN FLOOR - 594 SqFt



## UPPER FLOOR - 706 SqFt



## UPPER FLOOR OPTIONAL 2 BEDROOM + BONUS ROOM



[www.thepalisadesonline.com](http://www.thepalisadesonline.com)  
[www.westcanadiandevlopment.com](http://www.westcanadiandevlopment.com)



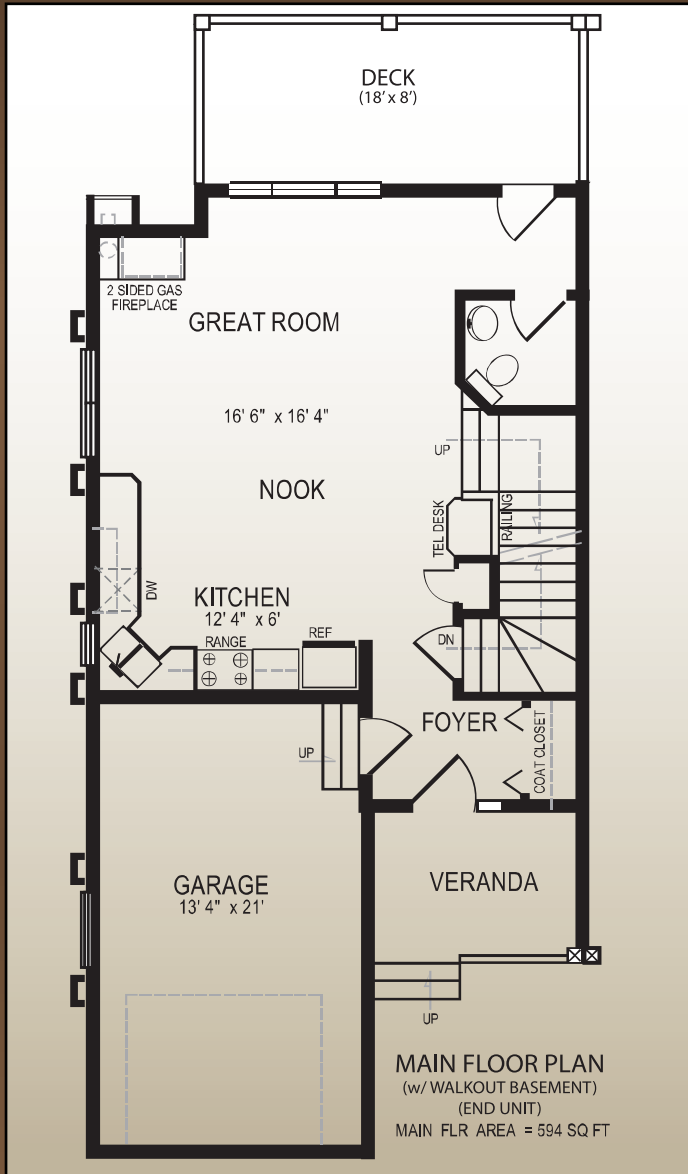
WEST CANADIAN  
 DEVELOPMENT CORP.

Feature specs and prices are subject to builder discretion and change without notice.

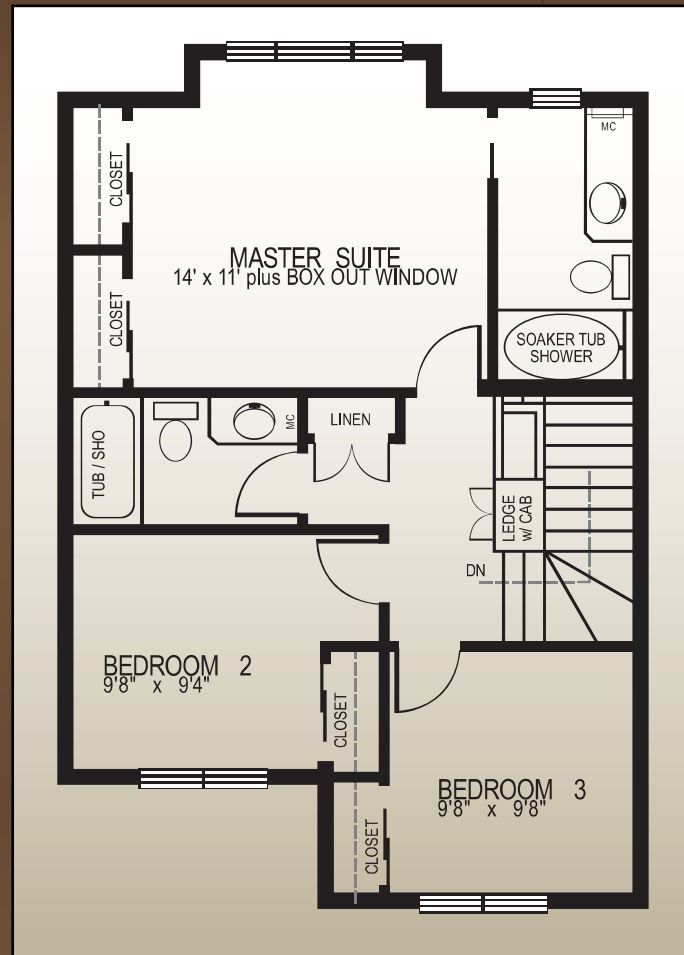
# FLOOR PLANS

MAIN FLOOR AREA = 594 SQ FT  
UPPER FLOOR AREA = 706 SQ FT  
TOTAL AREA = 1300 SQ FT

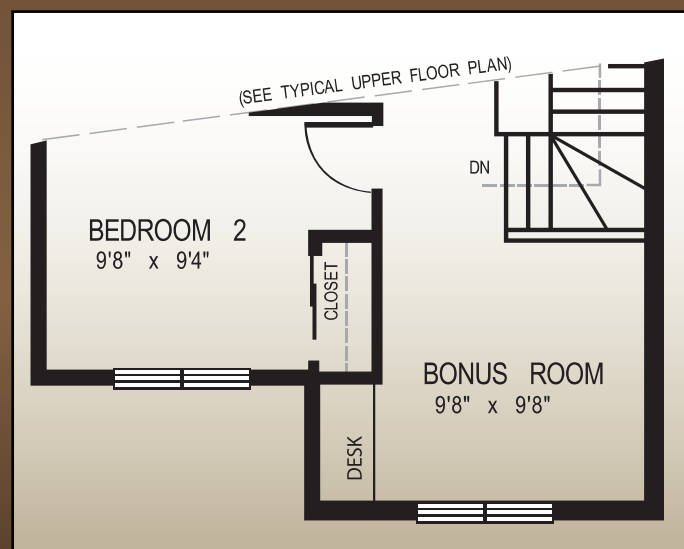
## MAIN FLOOR (OPTION) WITH WALKOUT BASEMENT - 594 SqFt



## UPPER FLOOR - 706 SqFt



## UPPER FLOOR OPTIONAL 2 BEDROOM + BONUS ROOM



WEST CANADIAN  
DEVELOPMENT CORP.

[www.thepalisadesonline.com](http://www.thepalisadesonline.com)  
[www.westcanadiandevelopment.com](http://www.westcanadiandevelopment.com)

Feature specs and prices are subject to builder discretion and change without notice.

# CONTACT US

For more information, please contact :



**Cam Bird**  
RE/MAX Saskatoon  
Phone 306-221-0654  
cambird@sellingsaskatoon.com



**Corinne Cartier**  
West Canadian Development Corp.  
Client Care Consultant  
Phone 306-717-5679  
corinne@westcanadiandevlopment.com



**WEST CANADIAN  
DEVELOPMENT CORP.**



**WEST CANADIAN  
DEVELOPMENT CORP.**

[www.thepalisadesonline.com](http://www.thepalisadesonline.com)  
[www.westcanadiandevlopment.com](http://www.westcanadiandevlopment.com)

Feature specs and prices are subject to builder discretion and change without notice.